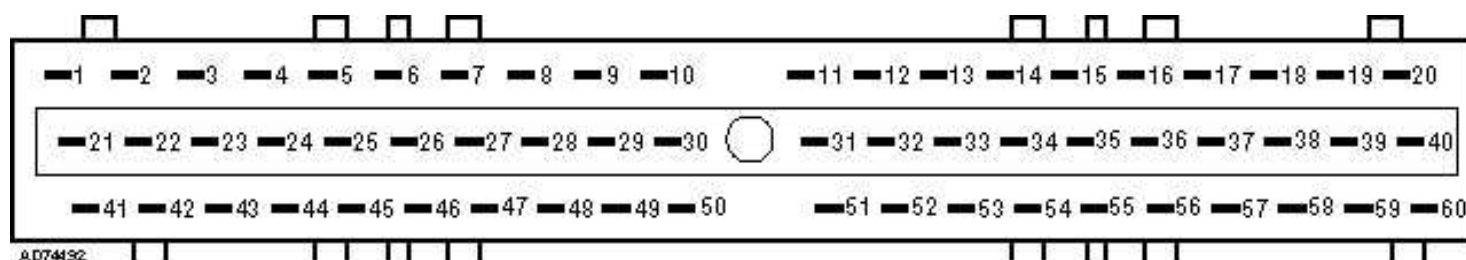


Telephone:
Fax:
VAT Registration No.:

X88	AC connector
A23	Alarm system control module
31	Battery -
30	Battery +
B54	Crankshaft position (CKP) sensor
X1	Data link connector (DLC)
A35	Engine control module (ECM)
K46	Engine control relay
B24	Engine coolant temperature (ECT) sensor
Y104	Evaporative emission (EVAP) canister purge valve
M12	Fuel pump
K20	Fuel pump relay
F	Fuse
B72	Heated oxygen sensor (HO2S)
X60	Idle adjustment connector
Y56	Idle speed control (ISC) actuator
T1	Ignition coil
A4	Ignition control module (ICM)
15	Ignition switch - ignition ON
S39	Inertia fuel shut-off (IFS) switch
Y3	Injector
R41	Injector series resistor
B25	Intake air temperature (IAT) sensor
B83	Manifold absolute pressure (MAP) sensor
W21	Octane coding plug
S231	Power steering pressure (PSP) switch
Y111	Secondary air injection (AIR) solenoid
K4	Starter motor relay
C3	Suppressor
P7	Tachometer
B147	Throttle position (TP) sensor
B33	Vehicle speed sensor (VSS)



A074432

Manufacturer: Ford

Model: Fiesta ('89) 1,1

© Autodata Limited 2010

Engine code: G6A

Output: 37 (50) 4800

Valid forever. 31/10/2012

Tuned for: R-Cat

Year: 1989-96

V8 500- /Autodata

bl = blue	br = brown	el = cream	ge = yellow
gn = green	gr = grey	nf = neutral	og = orange
rs = pink	rt = red	sw = black	vi = violet
ws = white	hbl = light blue	hgn = light green	rbr = maroon
x = braided cable	y = high tension	z = non-cable connection	

NOTE: In certain diagrams (Citroen, Peugeot & Renault), colour codes are replaced by numbers which are used to identify a particular cable and not the colour. In this instance, the cables will be numbered at each end close to the harness connector.

